

SECTION TWO

Performance Data, Fiscal Analysis and Student Enrollment Information

PERFORMANCE DATA

General Information

Listed below are information/data about the Big Sandy ISD that can be considered in viewing performance and fiscal data.

- The student enrollment as of October 2006 was 776.
- The district has 54.3 percent economically disadvantaged and 14.4 percent special education students.
- Number of graduates in 2005 was 22 students or 100 percent of the class.
- The Mean Total Score on the SAT I was 1060 and the ACT Composite Score was 20.6.
- The district encompasses an area of 87.16 square miles.
- Forty-eight (48) percent of all students are transported by bus.
- The total staff full-time equivalent (FTE) in 2005-06 was 139.48 of which 69.94 or 50.1 percent were teachers. The auxiliary staff and educational aides accounted for 37.1 percent of the staff; central administration 1.9 percent; campus administration 3.6 percent and professional support staff 7.3 percent.
- The teacher turnover rate was 13.4 percent in 2005-06.

Highlights of Student Performance

The following are highlights of Big Sandy ISD student performance and campus ratings earned in 2006:

- All three campuses were rated as Academically Acceptable by the Texas Education Agency (TEA).
- The district earned a Gold Performance Acknowledgement for the Texas Success Initiative in English/Language Arts.
- Several campuses received other Gold Performance Acknowledgements:
 - Big Sandy Elementary (Commended Performance in Math)
 - Big Sandy Junior High (Commended Performance in Reading and Writing)
 - Big Sandy High School (Commended Performance in Reading, Comparable Improvement in Reading and Texas Success Initiative in English/Language Arts.
 - All Big Sandy ISD campuses met adequate yearly progress requirements under the No Child Left Behind Act for 2006.

FISCAL ANALYSIS

The summary below provides a “fiscal snapshot” of Big Sandy ISD. Other lists, tables and descriptions found in this section provide detailed data about the finances of the district.

- The appraisal district assessed value of property in the district (after exemptions) is \$203,065,202.
- The district has a bonded indebtedness of \$2,220,103.
- The 2006-07 Maintenance and Operation tax rate is \$1.37 and Interest and Sinking Fund, or Debt Service, tax rate is \$0.06 giving a total tax rate of \$1.43 per \$100 dollar valuation.
- The total expenditure per student in 2004-05 was \$6,563.
- Big Sandy ISD received an over all rating of Superior Achievement on the School FIRST financial audit.

Additional information about the district from the TEA publication SNAPSHOT 2006 is presented below.

Big Sandy ISD Texas Education Agency SNAPSHOT 2006

1. District Accountability Ratings	Academically Acceptable	
2. Total Number of Schools		3
----- STUDENTS -----		
3. Total Students		736
4. % African American		16.2
5. % Hispanic		5.2
6. % White		78.4
7. % Other		0.3
8. % Economically Disadvantaged		54.3
9. % Special Education		14.4
10. % Bilingual/ESL Education		2.6
11. % Career & Technology Ed.		18.3
12. % Gifted & Talented Ed.		5.8
13. Attendance Rate (2004-05)		95.8
14. Annual Dropout Rate Gr. 7-8 (2004-05)		0.0
15. Four-year Dropout Rate (Class of 2005)		0.0
16. Number of Graduates (Class of 2005)		22
17. % Graduated (Class of 2005)		100
----- TAKS -----		
% STUDENTS PASSING-ALL GRADES SPRING '06		
18. All Tests Taken		63.0
19. Reading/Eng. Lang. Arts		88.0
20. Writing		93.0
21. Mathematics		72.0
22. Science		62.0
23. Social Science		76.0
24. African American		36.0
25. Hispanic		57.0
26. White		68.0
27. Other		
28. Economically Disadvantaged		61.0
29. SDAA MET ARD		88.0
----- COLLEGE ADMISSIONS TESTS ----- (CLASS OF 2005)		
30. Percent Tested		84.2
31. Percent At or Above Criterion		18.8
32. SAT: Mean Total Score		1060
33. ACT: Mean Composite Score		20.6
----- STAFF -----		
34. Total Staff FTE		129.2
35. Total Teacher FTE		67.6
36. % Central Administrative		1.5
37. % School Administrative		3.1
38. % Professional Support Staff		7.1
39. % Teachers		52.3

40. % Educational Aides	9.3
41. % Auxiliary Staff	26.7
42. Average Central Administration Salary	67,800
43. Average School Administration Salary	52,787
44. Average Professional Support Staff Salary	44,240
45. Average Teacher Salary	34,505
46. % Minority	4.4
47. Number of Students per Total Staff	5.7
48. Number of Students per Teacher	10.9
----- TEACHERS -----	
49. % with 5 or Fewer Years Experience	29.6
50. Average Years of Experience	11.6
51. % with Advanced Degrees	14.8
52. Teacher Turnover Rate	13.4
53. % African American	4.4
54. % Hispanic	0
55. % White	95.6
56. % Other	0
57. % Regular Education	75.0
58. % Special Education	8.9
59. % Compensatory Education	10.6
60. % Bilingual/ESL Education	1.1
61. % Career & Technology Education	3.9
62. % Other Education (Includes G & T)	0.1
---- TAXES AND ACTUAL REVENUES ----	
63. Taxable Value per Pupil	167,783
64. Adopted Total Tax Rate	1.570
65. Total Revenue	4,953,658
66. Total Revenue per Pupil	7,263
67. % State	63.5
68. % Local and Other	36.4
69. % Federal	0.1
----- FUND BALANCES -----	
70. Fund Balance (End of 2004-05)	1,058,456
71. % Fund Balance (Of 2005-06 Budget)	21.5
----- ACTUAL EXPENDITURES -----	
72. Total Expenditures	4,922,684
73. % Instructional	60.1
74. % Central Administrative	6.3
75. % School Leadership	7.8
76. % Plant Services	12.3
77. % Other Operating	0.0
78. % Non-Operating	
79. Total Operating Expenditures	4,476,304
80. Total Operating Expend. Per Pupil	6,563
----- ACTUAL INSTRUCTIONAL -----	
EXPENDITURES	
81. Total Instructional Expenditures	2,689,245
82. Total Instructional Expend. Per Pupil	3,943
83. % Regular Education	63.9
84. % Special Education	12.9
85. % Compensatory Education	12.5
86. % Bilingual/ESL Education	0.7
87. % Career & Technology Education	3.3
88. % Gifted & Talented Education	1.6

T E X A S E D U C A T I O N A G E N C Y : D I V I S I O N O F S T A T E F U N D I N G
B I G S A N D Y I S D 2 0 0 5 - 2 0 0 6
S U M M A R Y O F F I N A N C E S
 Wednesday, February 7, 2007

COUNTY-DISTRICT: 230901

FOUNDATION STATUS: FOUNDATION

BASIC INFORMATION

	(LPE)	(N_F)
TOTAL REFINED ADA.....	664.059	667.488
ADJUSTED TOTAL REFINED ADA.....	664.059	667.488
SPECIAL EDUCATION FTE.....	36.089	40.059
CAREER & TECHNOLOGY FTE.....	39.577	30.626
REGULAR PROGRAM ADA.....	588.393	596.803
NEW CAMPUS ADA.....	0.000	0.000
TEACHER, LIBRARIAN, NURSE, & COUNSELOR FTES	73.000	73.000
CPTD INDEX VALUE.....	\$107,534,738	\$106,632,475
ADJUSTED INDEX VALUE.....	107,534,738	106,632,475
ADJUSTED INDEX VALUE FOR SECTION 42.106....	107,534,738	106,632,475
PAYMENT CLASS.....	2	2
COST OF EDUCATION INDEX.....	1.06	1.06
ADJUSTED CEI	1.06	1.06
TOTAL TAX LEVY.....	\$1,997,021	\$1,811,312
I & S TAX COLLECTIONS.....	75,766	85,140
M & O TAX COLLECTIONS.....	1,921,255	1,726,172
TOTAL TAX COLLECTIONS.....	1,997,021	1,811,312

PROGRAM INTENT CODE

11	REGULAR BLOCK GRANT.....	\$1,949,934	\$1,974,224
23	SPECIAL EDUCATION BLOCK GRANT.....	372,203	417,705
22	CAREER & TECHNOLOGY BLOCK GRANT.....	177,064	136,770
21	GIFTED & TALENTED BLOCK GRANT.....	13,109	13,153
24	COMPENSATORY EDUCATION BLOCK GRANT.....	266,545	271,088
25	BILINGUAL EDUCATION BLOCK GRANT.....	6,127	4,400
11	PUBLIC EDUCATION GRANT STUDENT ALLOTMENT...	0	0
99	NEW INSTRUCTIONAL FACILITIES ALLOTMENT.....	0	0
99	TRANSPORTATION.....	76,665	91,573

TOTAL COST OF TIER I.....	\$ 2,861,646	\$ 2,908,920
LESS LOCAL SHARE.....	(924,799)	(917,039)
STATE SHARE.....	<u>\$ 1,936,847</u>	<u>\$ 1,991,881</u>
ADDITIONAL AID		
TIER II AID.....	\$1,171,132	\$1,221,116
ADDITIONAL AID UNDER HB1, WADA*\$110	119,185	120,551
TECHNOLOGY ALLOTMENT.....	18,185	18,278
CHAPTER 46 EXISTING DEBT ALLOTMENT.....	85,821	83,916
CHAPTER 46 IFA.....	0	0
OTHER PROGRAMS.....	0	0
TOTAL STATE AID.....	<u>\$ 3,331,170</u>	<u>\$ 3,435,742</u>
	=====	=====

FUND/REVENUE CODE RECAP OF STATE AID BY FUNDING SOURCE:

199/5811	AVAILABLE SCHOOL FUND.....	\$201,518	\$201,518
411/5829	TIF FUND-TECHNOLOGY ALLOTMENT....	18,185	18,278
599/5829	CHAPTER 46 EXISTING DEBT ALLOTMENT....	85,821	83,916
199/599/5829	CHAPTER 46 IFA.....	0	0
199/5812	FOUNDATION SCHOOL FUND + HB1 AID...	3,025,646	3,132,030
TOTAL STATE AID.....		<u>\$ 3,331,170</u>	<u>\$ 3,435,742</u>
		=====	=====

Big Sandy ISD at a Glance - 2005-06

TOTAL MEMBERSHIP: 736

County: UPSHUR

District: (230901) BIG SANDY ISD

RECEIPTS

	GENERAL FUND	%	PER STUDENT	ALL FUNDS	%	PER STUDENT
<u>Total Revenue</u>	5,047,511	100.00%	6,858	5,503,555	100.00%	7,478
Local Tax	1,971,255	39.05%	2,678	2,047,021	37.19%	2,781
Other Local and Intermediate	79,500	1.58%	108	171,500	3.12%	233
State	2,996,256	59.36%	4,071	3,078,419	55.94%	4,183
Federal	500	0.01%	1	206,615	3.75%	281
<u>Total Receipts</u>	5,047,511	100.00%	6,858	5,503,555	100.00%	7,478
Total Revenue	5,047,511	100.00%	6,858	5,503,555	100.00%	7,478
Equity Transfers	0	0.00%	0	0	0.00%	0
Total Other Resources	0	0.00%	0	0	0.00%	0

DISBURSEMENTS

Total Expenditures

	GENERAL FUND	%	PER STUDENT	ALL FUNDS	%	PER STUDENT
BY OBJECT	4,911,083	100.00%	6,673	5,362,730	100.00%	7,286
Payroll	3,833,687	78.06%	5,209	3,975,449	74.13%	5,401
Other Operating	919,396	18.72%	1,249	1,074,601	20.04%	1,460
Debt Service	0	0.00%	0	154,680	2.88%	210
Capital Outlay	158,000	3.22%	215	158,000	2.95%	215
BY FUNCTION (Objects 6100-6400 only)						
Community Services (61)	0		0	0		0
Total Operating Expenditures	4,753,083	100.00%	6,458	5,050,050	100.00%	6,861
Instruction (11,95)	2,816,817	59.26%	3,827	2,816,817	55.78%	3,827
Instructional Res Media (12)	78,515	1.65%	107	78,515	1.55%	107
Curriculum/Staff Develop (13)	14,353	0.30%	20	14,353	0.28%	20
Instructional Leadership (21)	0	0.00%	0	0	0.00%	0
School Leadership (23)	342,186	7.20%	465	342,186	6.78%	465

	GENERAL FUND	%	PER STUDENT	ALL FUNDS	%	PER STUDENT
Guidance Counseling Svcs (31)	106,174	2.23%	144	106,174	2.10%	144
Social Work Services (32)	8,500	0.18%	12	8,500	0.17%	12
Health Services (33)	44,135	0.93%	60	44,135	0.87%	60
Transportation (34)	197,109	4.15%	268	197,109	3.90%	268
Food (35)	0	0.00%	0	296,967	5.88%	403
Cocurricular (36)	245,010	5.15%	333	245,010	4.85%	333
General Administration (41,92)	321,874	6.77%	437	321,874	6.37%	437
Plant Maint/Operation (51)	543,095	11.43%	738	543,095	10.75%	738
Security/Monitoring (52)	8,902	0.19%	12	8,902	0.18%	12
Data Processing Services (53)	26,413	0.56%	36	26,413	0.52%	36
<u>Total Disbursements</u>	4,992,883	100.00%	6,784	5,444,530	100.00%	7,397
Total Expenditures	4,911,083	98.36%	6,673	5,362,730	98.50%	7,286
Equity Transfers	0	0.00%	0	0	0.00%	0
Total Other Uses	0	0.00%	0	0	0.00%	0
Intergovernmental Charge	81,800	1.64%	111	81,800	1.50%	111

PROGRAM EXPENDITURES

	GENERAL FUND	%	PER STUDENT	ALL FUNDS	%	PER STUDENT
<u>Operating Expenditures - Program</u>	3,694,741	100.00%	5,020	3,694,741	100.00%	5,020
Regular	2,366,598	64.05%	3,215	2,366,598	64.05%	3,215
Gifted and Talented	57,252	1.55%	78	57,252	1.55%	78
Career and Technology	109,209	2.96%	148	109,209	2.96%	148
Students with Disabilities	523,753	14.18%	712	523,753	14.18%	712
Accelerated Education	426,385	11.54%	579	426,385	11.54%	579
Bilingual	28,128	0.76%	38	28,128	0.76%	38
Nondisc Alt Ed-AEP Basic Serv	0	0.00%	0	0	0.00%	0
Disc Alt Ed-DAEP Basic Serv	0	0.00%	0	0	0.00%	0
Disc Alt Ed-DAEP Supplemental	0	0.00%	0	0	0.00%	0
T1 A Schoolwide-St Comp>=50%	0	0.00%	0	0	0.00%	0
Athletics/Related Activities	183,416	4.96%	249	183,416	4.96%	249

Table 2-1. Big Sandy ISD Staff Count and Pay by Total and Average

Region: 07 County: UPSHUR COUNTY District (230901)

Staff	FTE Count	Total Pay	Average Pay
TOTAL PERSONNEL	139.48	\$4,421,552	\$31,701
TEACHERS	69.94	\$2,647,902	\$37,860
__PRE-K & KINDERGARTEN	6.86	\$261,561	\$38,127
__ELEMENTARY	22.09	\$857,068	\$38,791
__SECONDARY	25.98	\$957,585	\$36,852
__SPECIAL EDUCATION	4.00	\$146,396	\$36,595
__ALL LEVEL	11.00	\$425,292	\$38,663
SUPPORT STAFF	10.16	\$438,516	\$43,169
__COUNSELORS	1.00	\$49,568	\$49,568
__EDUC DIAGNOSTICIANS	1.00	\$52,008	\$52,008
__LIBRARIANS	1.00	\$40,400	\$40,400
__NURSES/PHYSICIANS	1.00	\$28,990	\$28,990
__THERAPISTS	1.00	\$28,320	\$28,320
__OTHER SUPPORT STAFF	5.16	\$239,230	\$46,379
ADMINISTRATORS	7.63	\$447,225	\$58,606
__ADMIN/INSTR OFFICERS	1.63	\$101,817	\$62,426
__PRINCIPALS	3.00	\$183,552	\$61,184
__ASSISTANT PRINCIPALS	2.00	\$91,440	\$45,720
__SUPERINTENDENTS	1.00	\$70,416	\$70,416
TOTAL PROFESSIONAL	87.73	\$3,533,643	\$40,279
EDUCATIONAL AIDES	14.72	\$196,039	\$13,321
AUXILIARY STAFF	37.03	\$691,870	\$18,684

Table 2-2. Average Salary Schedule for 2005-06

Central Administration	Campus Administration	Teachers	Professional Support
\$65,487	\$54,998	\$37,859	\$43,169

Table 2-3. District's Values and Budget Information

2006 Market Valuation	\$280,452,971
2005 Assessed Valuation	\$203,065,202
Total Operating Budget in 2005-06	\$5,614,363
Debt Service Budget 2005-06	\$156,886
Current Actual Fund Balance (August 2006)	\$3,030,210

Student Enrollment Information

This section addresses student enrollment in the Big Sandy ISD. (Section I included data regarding population projections for Big Sandy, Upshur County and the state.) Population projections, like all projections, involve the use of certain assumptions about economic conditions, migration, and future events that may or may not occur. Therefore, users of these estimates must review these numbers and forecasts periodically.

Texas School Planning uses two different methods to project school district enrollment: **cohort survival** and **trend analysis**. **Cohort survival** divides enrollment data into subgroups, analyzes changes in these sub-groups over a number of years, and predicts the future enrollment of each of these subgroups independently. Many enrollment projections use birth and net migration data to make projections; however, TSPI uses historical enrollment by grade level instead. We have found that grade level enrollment is a better predictor of enrollment trends than county birth and migration data. The birth rate and migration data is reviewed to determine the trend from these data sources.

Survival rates are calculated by comparing the current year’s enrollment in one grade with the prior year’s enrollment in the previous grade. The rate is the percentage of students who “survived” to the next grade level. Survival calculations for the three previous years are averaged to help account for wide variations in class size during a single school year. Enrollment projections are calculated by multiplying the average survival rate for each grade level by the current enrollment. Projections are calculated for the next five to ten years using these average survival rates.

In **trend analysis**, enrollment is projected by grade level by fitting a trend line to each grade level using a least squares method. The trend analysis does not take into account cohorts of students moving through a school system; rather, the analysis looks at the enrollment in a grade level over a number of years. The trend line that is yielded for each grade level is used in part to predict future enrollment by grade level.

Table 2-4. Big Sandy ISD Enrollment History

Grade	2000-01	2001-02	2002-03	2003-04	2004-05	2005-06	2006-07
EE	0	0	0	0	6	7	7
Pre-K	33	34	32	32	35	33	46
Kinder	52	56	58	53	51	60	63
1st	58	57	60	53	53	54	54
2nd	55	53	58	55	53	48	55
3rd	47	57	55	55	55	58	54
4th	48	43	53	59	56	62	58
5th	43	57	45	58	56	59	61
6th	49	44	56	42	54	58	62
7th	57	48	54	56	40	53	62
8th	40	58	55	52	59	45	57
9th	72	46	72	50	47	66	49
10th	52	61	39	64	44	40	66
11th	41	51	55	29	54	45	42
12th	41	37	45	47	19	48	47
Total	688	702	737	705	682	736	783

Enrollment in the Big Sandy ISD has increased approximately 100 students since the 2004-05 school year. Over the last three years, the largest percentage increases have been in the pre-kindergarten and kindergarten grade levels. When cohorts of students (moving through the school system) are projected into future years, the rate of growth escalates. Comparisons of district enrollment by year and by campus are shown in the figures below.

Figure 2-1. Big Sandy ISD Enrollment

Comparison of Enrollment by Year

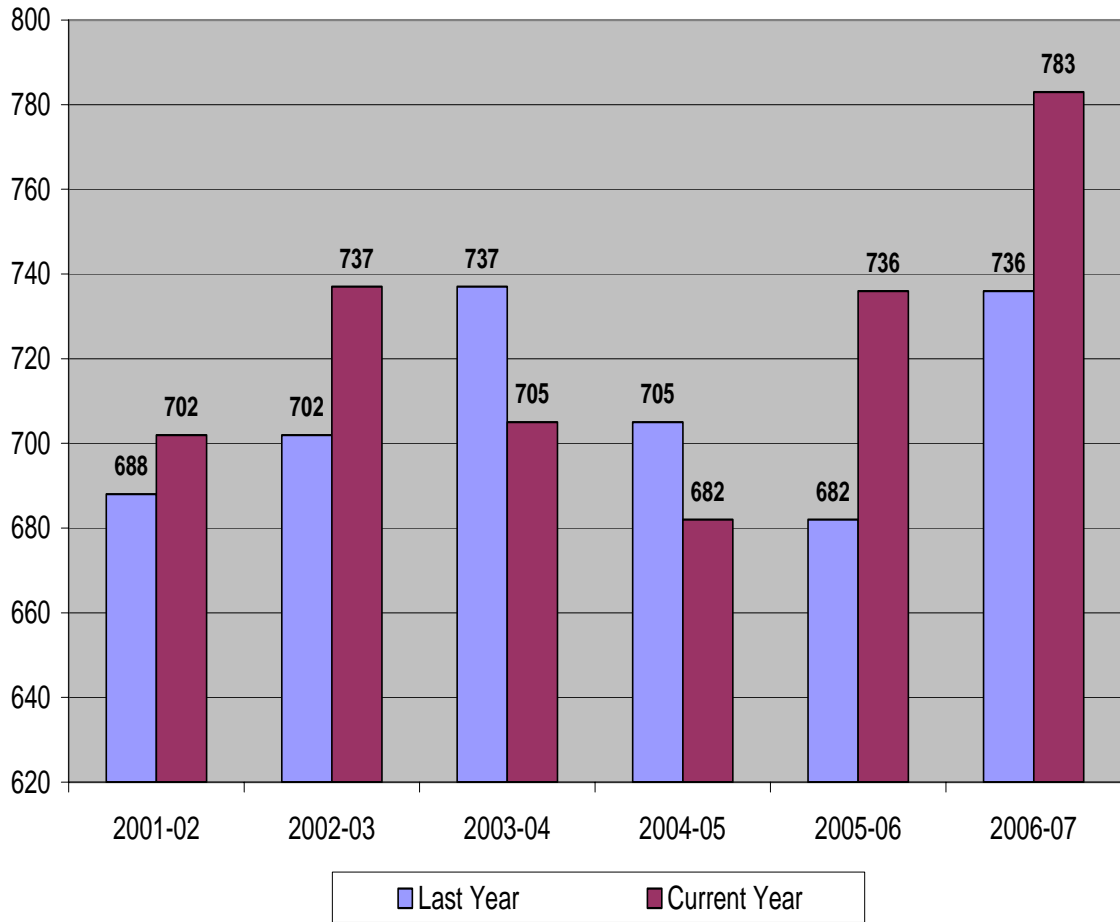
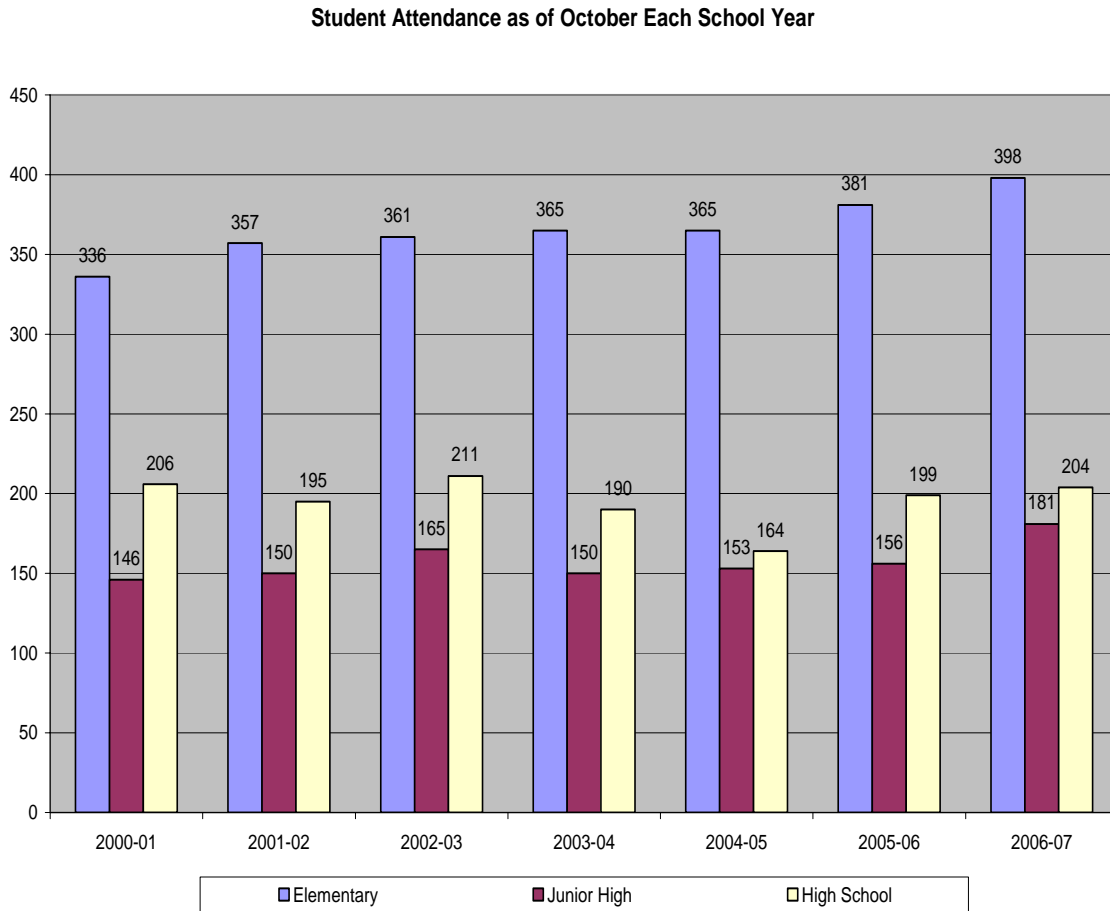


Figure 2-2. Big Sandy ISD Enrollment Comparison by Campus Type



Utilizing several sources of data TSPI staff developed three growth scenarios for BSIAD. A **low growth** scenario projects average annual enrollment increases of 1.1 percent per year. The low growth projections were computed by using cohort survival projections based on the last seven years of data, a period of relatively flat enrollment changes. This low growth scenario, however, forecasts a growth rate that is higher than population projections for both Big Sandy (0.59%) and Upshur County (0.87%) over the next ten years.

A **moderate growth** scenario, computed by using trend analysis projections based on the last four years of data, projects a 2.9 percent annual increase over the next decade.

Due to the relatively flat growth pattern over the last several years, forecasting by grade level using trend analysis seems to make the most sense for this particular situation.

Finally, **high growth** projections were calculated using cohort survival based on the last four years of growth. These projections emphasize the larger growth in pre-kindergarten and kindergarten enrollments. In this scenario, these larger cohorts of students work their way through the system thus increasing the enrollment in subsequent grades in the next 5-10 years. The high growth scenario yields average annual increases of 5.1 percent. The three student enrollment projections are included in Tables 2-5 through 2-8 below. Two charts showing the low growth, moderate growth and high growth scenarios follow the tables.

Table 2-5. Student Enrollment Projections with 1.1 Percent of Growth

Cohort - Low Growth											
Grade	2006-07	2007-08	2008-09	2009-10	2010-11	2011-12	2012-13	2013-14	2014-15	2015-16	2016-17
EE	7	7	8	8	9	9	9	10	10	11	11
Pre-K	46	46	47	47	47	48	48	48	49	49	49
Kinder	63	64	64	65	66	66	67	68	68	69	70
1st	54	63	64	65	65	66	67	67	68	69	69
2nd	55	52	61	62	62	63	63	64	65	65	66
3rd	54	55	52	62	62	63	63	64	65	65	66
4th	58	54	56	53	62	62	63	64	64	65	66
5th	61	58	55	56	53	62	63	63	64	65	65
Sub-Total	398	401	406	416	426	439	444	448	453	458	463
6th	62	61	58	54	56	53	62	62	63	64	64
7th	62	63	61	59	55	56	53	63	63	64	65
8th	57	63	64	62	60	56	57	54	63	64	65
Sub-Total	181	186	183	175	170	165	172	179	190	192	194
9th	49	58	64	65	63	61	57	58	55	65	65
10th	66	44	52	57	58	57	54	51	52	49	58
11th	42	61	41	48	53	54	53	50	47	48	46
12th	47	39	57	38	45	49	50	49	47	44	45
Sub-Total	204	202	213	208	219	221	214	208	201	206	214
Total	783	789	803	800	816	824	830	836	844	856	870
Average Annual Growth	= 1.1%										

Table 2-6. Student Enrollment Projections with 2.9 Percent of Growth

Trend - Moderate Growth											
Grade	2006-07	2007-08	2008-09	2009-10	2010-11	2011-12	2012-13	2013-14	2014-15	2015-16	2016-17
EE	7	11	13	15	17	19	22	24	26	28	30
Pre-K	46	47	49	51	53	57	58	59	61	62	63
Kinder	63	67	68	70	72	75	77	79	81	82	83
1st	54	55	57	59	61	64	64	66	69	71	73
2nd	55	56	57	59	60	61	62	63	64	65	67
3rd	54	55	56	56	57	58	59	60	61	62	64
4th	58	60	60	60	60	61	61	61	62	62	62
5th	61	62	63	64	65	66	68	69	70	71	72
Sub-Total	398	410	422	434	446	461	470	481	493	503	515
6th	62	63	64	66	67	69	71	73	75	78	80
7th	62	61	64	67	70	73	76	79	82	85	88
8th	57	54	55	57	58	59	61	63	65	66	67
Sub-Total	181	177	183	190	195	201	208	215	222	229	235
9th	49	57	59	60	62	63	65	67	68	70	71
10th	66	54	54	54	55	55	55	55	55	56	56
11th	42	44	46	49	51	53	56	59	61	64	67
12th	47	48	50	53	54	57	60	63	64	66	68
Sub-Total	204	203	209	217	221	228	236	244	249	255	262
Total	783	790	814	840	862	890	914	940	964	988	1012
Average Annual Growth = 2.9%											

Table 2-7. Student Enrollment Projections with 5.1 Percent of Growth

Cohort - High Growth											
Grade	2006-07	2007-08	2008-09	2009-10	2010-11	2011-12	2012-13	2013-14	2014-15	2015-16	2016-17
EE	7	11	13	15	17	19	22	24	26	28	30
Pre-K	46	47	49	51	53	57	58	59	61	62	63
Kinder	63	66	69	71	75	78	81	85	88	92	96
1st	54	62	65	68	71	74	77	80	83	87	91
2nd	55	53	61	63	66	69	72	75	78	81	85
3rd	54	59	56	65	68	71	74	77	80	84	87
4th	58	57	62	59	68	71	74	77	81	84	88
5th	61	58	56	62	59	68	71	74	77	80	84
Sub-Total	398	411	430	454	476	506	528	550	574	599	624
6th	62	62	61	63	63	62	69	72	75	78	82
7th	62	64	66	68	71	75	79	81	84	87	89
8th	57	65	67	69	71	74	78	83	85	88	91
Sub-Total	181	191	194	200	205	211	226	235	244	253	261
9th	49	59	67	69	71	73	76	80	85	87	90
10th	66	42	51	58	59	61	63	66	70	73	75
11th	42	64	41	49	56	58	60	61	64	68	71
12th	47	36	55	36	42	48	50	51	53	55	58
Sub-Total	204	201	214	211	229	240	249	259	271	283	295
Total	783	803	838	865	909	957	1003	1045	1089	1135	1180
Average Annual Growth = 5.1%											

Table 2-8. Summary of Student Enrollment Projections with Percent of Growth

	Year	2006-07	2007-08	2008-09	2009-10	2010-11	2011-12	2012-13	2013-14	2014-15	2015-16	2016-17
Total	Projected Enrollment	783	789	803	800	816	824	830	836	844	856	870
Average Annual Growth = 21.1 %												
Total	Projected Enrollment	783	790	814	840	862	890	914	940	964	988	1012
Average Annual Growth = 2.9 %												
Total	Projected Enrollment	783	803	838	865	909	957	1003	1045	1089	1135	1180
Average Annual Growth = 5.1 %												

Figure 2-3. Summary of Student Enrollment Projections with Percent of Growth

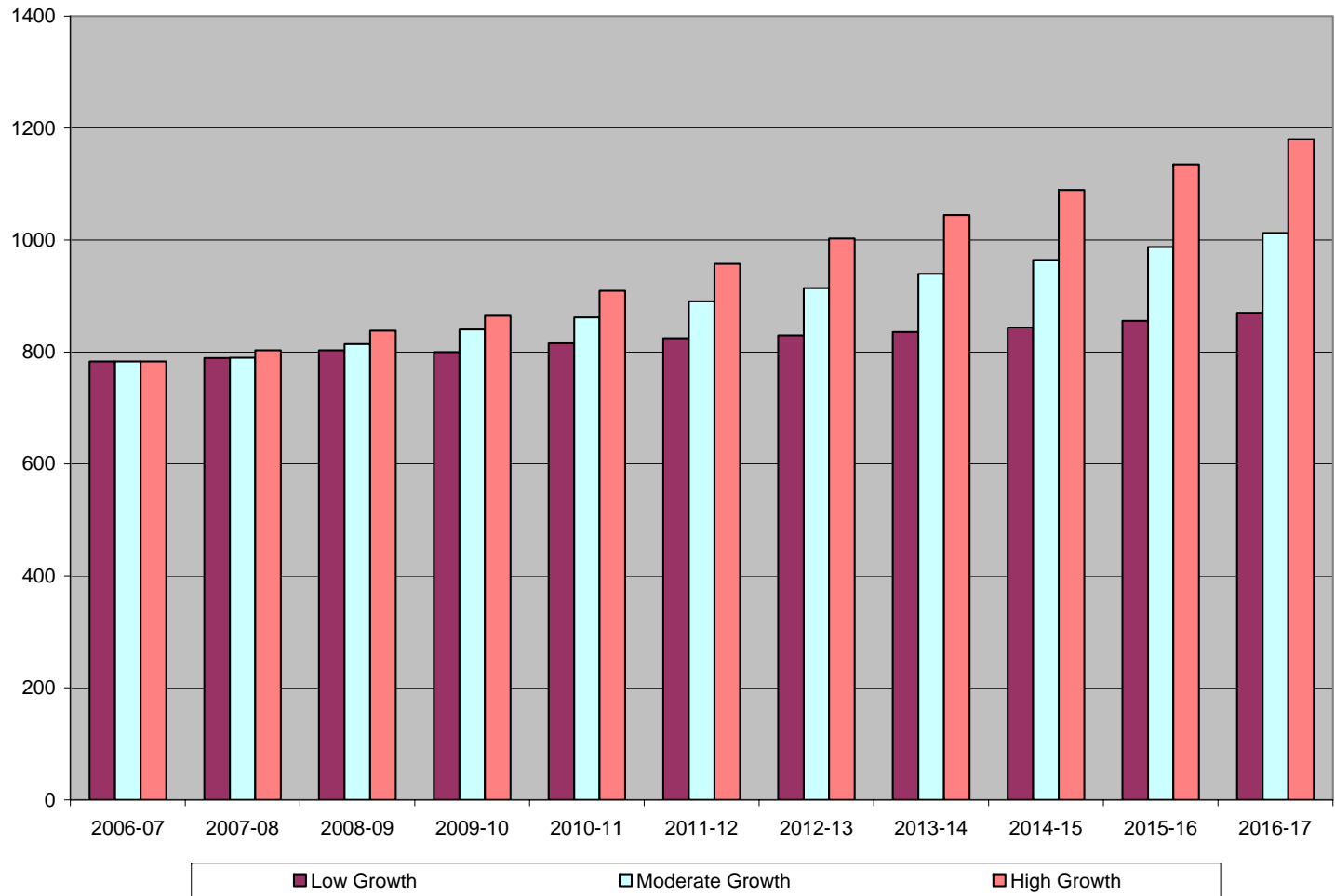
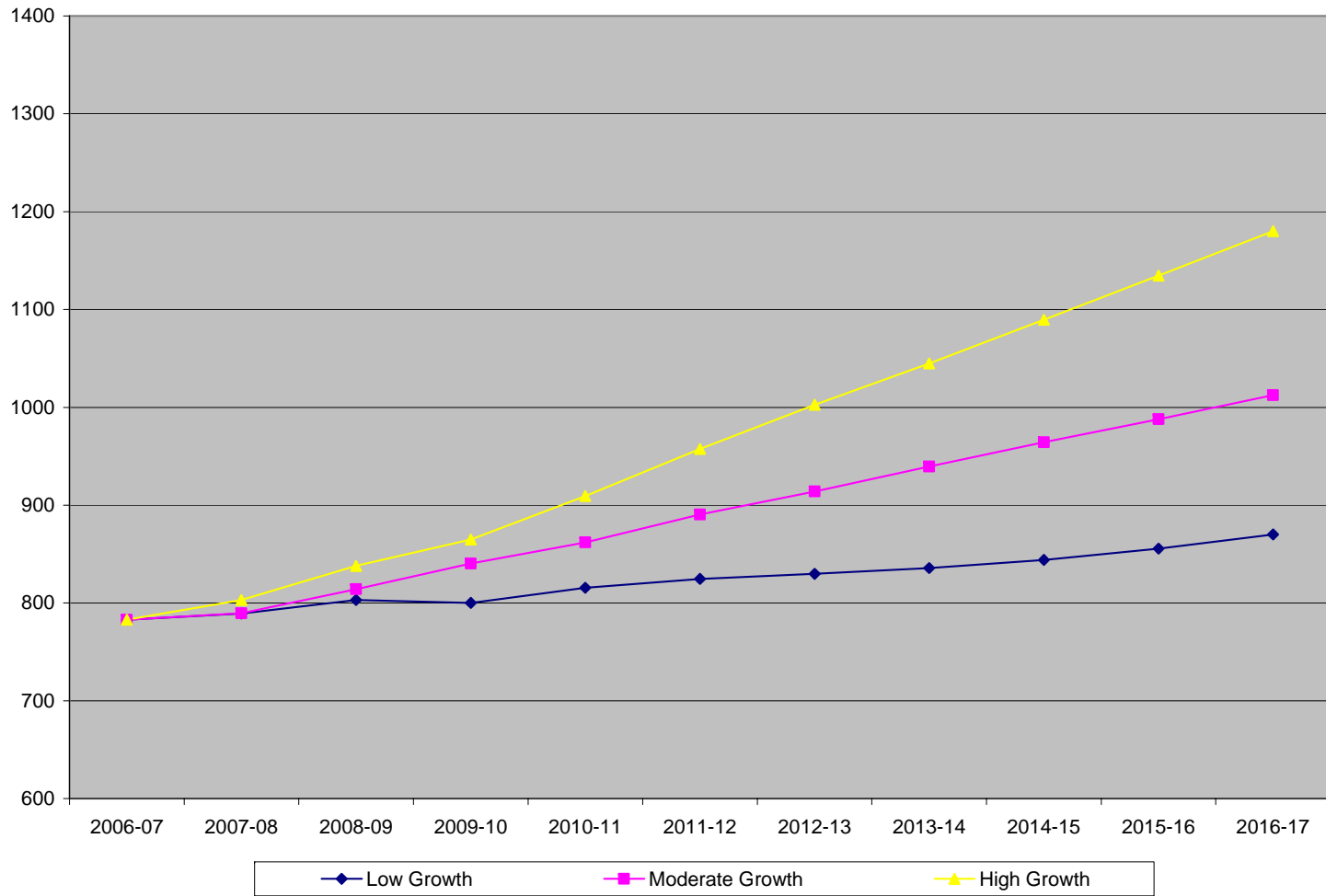


Figure 2.4. Summary of Student Enrollment Projections



Summary

The projections shown above are based on current trends and slight increases in growth in residential and industrial development in Big Sandy ISD. TSPI believes that Big Sandy ISD will grow at or above the moderate growth rate which projects an enrollment increase of approximately 230 students by 2016. The relocation of large scale employers to the Big Sandy ISD area could require in-migration of families to fill those positions and would likely accelerate student enrollment projections to the high growth scenario with a projected student enrollment of nearly 1,200 students by 2016. Although no major employers are known to be considering relocation to the area, the district will need to monitor changing economic forecasts for the Big Sandy area and Upshur County. The district will also need to continue monitoring the implementation of House Bill 1, any future court challenges to the new legislation, as well as future funding proposals and directives of the Texas Education Agency. In Section IV of the report planning scenarios are presented based on the student enrollment projections presented in this section.